



# Analog Color Sensor PR0075-A

The Analog Color Sensor PR0075-A is a high-speed color sensor system for the absolute analog collection of measurement values and it disposes of an integrated High-Power LED light source.

Differences in color which can be realized with the human eye can also be detected by the PR0075-A.

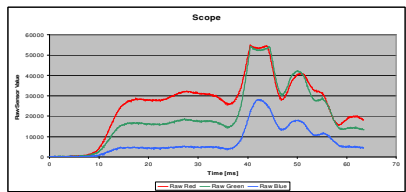
The sensor is designed for a very high processing speed, the sample rate is at 16 the differential measurement procedure.

The analog outputs have a 12 bit resolution, which enables to detect and evaluate bright and very dark colors precise at the same time, without changing the parameters.



The sensor disposes of an internal data memory which allows the detection of 1024 measuring values with adjustable demand interval, independently.

Via the PC-Tool the data is available in CSV format and can directly be evaluated in Excel and shown in a graphic. The data can also be retrieved via the DLL and be evaluated with own software.



**Technical data:**

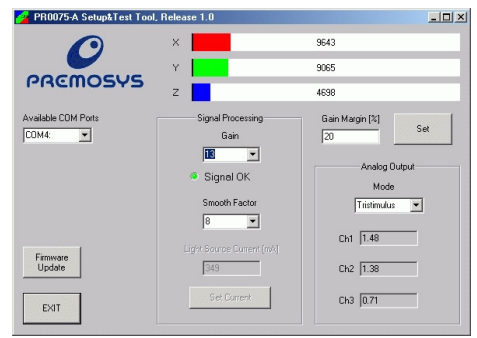
- Wavelength 400 - 700nm
- Sampling rate 16 KHz with differential measurement to eliminate environmental light
- 3 analog outputs – Resolution 12-Bit
- Output optionally x, y, Y (Chromaticity), Tristimulus (X, Y, Z), and CMY
- 13 amplification levels
- internal Resolution 16 Bit each channel

- Parallel registration of all color conducts
- internal High-Power light source
- Ethernet interface TCP-IP
- Measuring distance depending on utilized light guides and optics between 6-150mm
- Software Tool for parameterization

A comfortable intuitive software tool for commissioning and adjustment of the operational modes is included in the scope of delivery. In addition to the operating parameters also the operational modes

- Chromaticity – x, y, Y
- Tristimulus – X, Y, Z
- CMY

can be selected and stored remanent on the sensor.



**Dimensions PR0075-A**

- Length: app. 115mm
- Breadth: app. 97mm
- Height: app. 26mm

**Power supply**

- 24V DC +/-10%
- 0,5A

Weight: app. 450g