



# Colorimeter PR0075-A2

The Colorimeter PR0075-A2 is a high-speed color measurement system for the absolute analog collection of measurement values.

A color adjustment by means of an absolute calibrated reference spectrometer is carried out in factory.

The absolute accuracy in average is ~1.6 dE. The relative accuracy also between the systems is less than +/-0.5 dE.

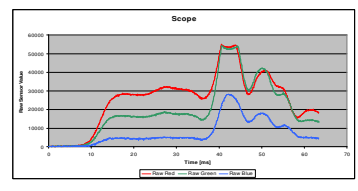
The analog outputs have a 12 bit resolution, which enables to detect and evaluate very bright and very dark colors precise at the same time, without changing the parameters.

Special-optics are available for different applications.



The system disposes of an internal data memory which allows the detection of 1024 measuring values with adjustable demand interval, independently.

Via the PC-Tool the data is available in CSV format and can directly be evaluated in Excel and shown in a graphic. The data can also be retrieved via the DLL and be evaluated with own software.



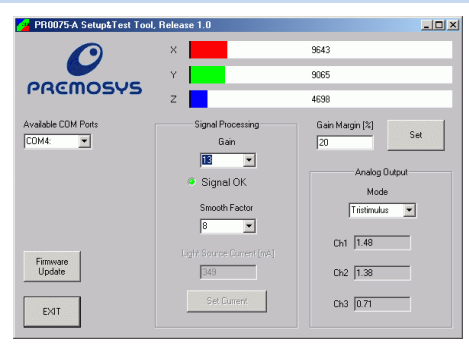
### Technical data:

- Power supply 24V DC
- Interface TCP/IP
- Measuring rate 16kHz – depends on operational mode
- 2 integrated High-Power LED's
- 13 amplification levels
- 16 Bit Resolution
- 3-channel parallel color detection
- 4 analog outputs 0-10V DC, 13 Bit Resolution
- Variable in-and outputs (Teach-In, Teach-In Ready)
- Analog output, channel #1 Tristimulus (X), Chromaticity (x), Lab (L), CMYK (C)
- Analog output, channel #2 Tristimulus (Y), Chromaticity (y), Lab (a), CMYK (M)
- Analog output, channel #3 Tristimulus (Z), Chromaticity (Z), Lab (b), CMYK (Y)
- Analog output, channel #4 CMYK (K)

A comfortable intuitive software tool for commissioning and adjustment of the operational modes is included in the scope of delivery. In addition to the operating parameters also the operational modes

- Chromaticity – x, y, Y
- Tristimulus – X, Y, Z
- CMY

can be selected and stored remanent on the sensor.



- Dimensions PR0075
- Length: app. 115mm
  - Breadth: app. 97mm
  - Height: app. 26mm

Dimensions without connectors

- Power supply
- 24V DC +/-10%; 0,5A
- Weight: app. 450g