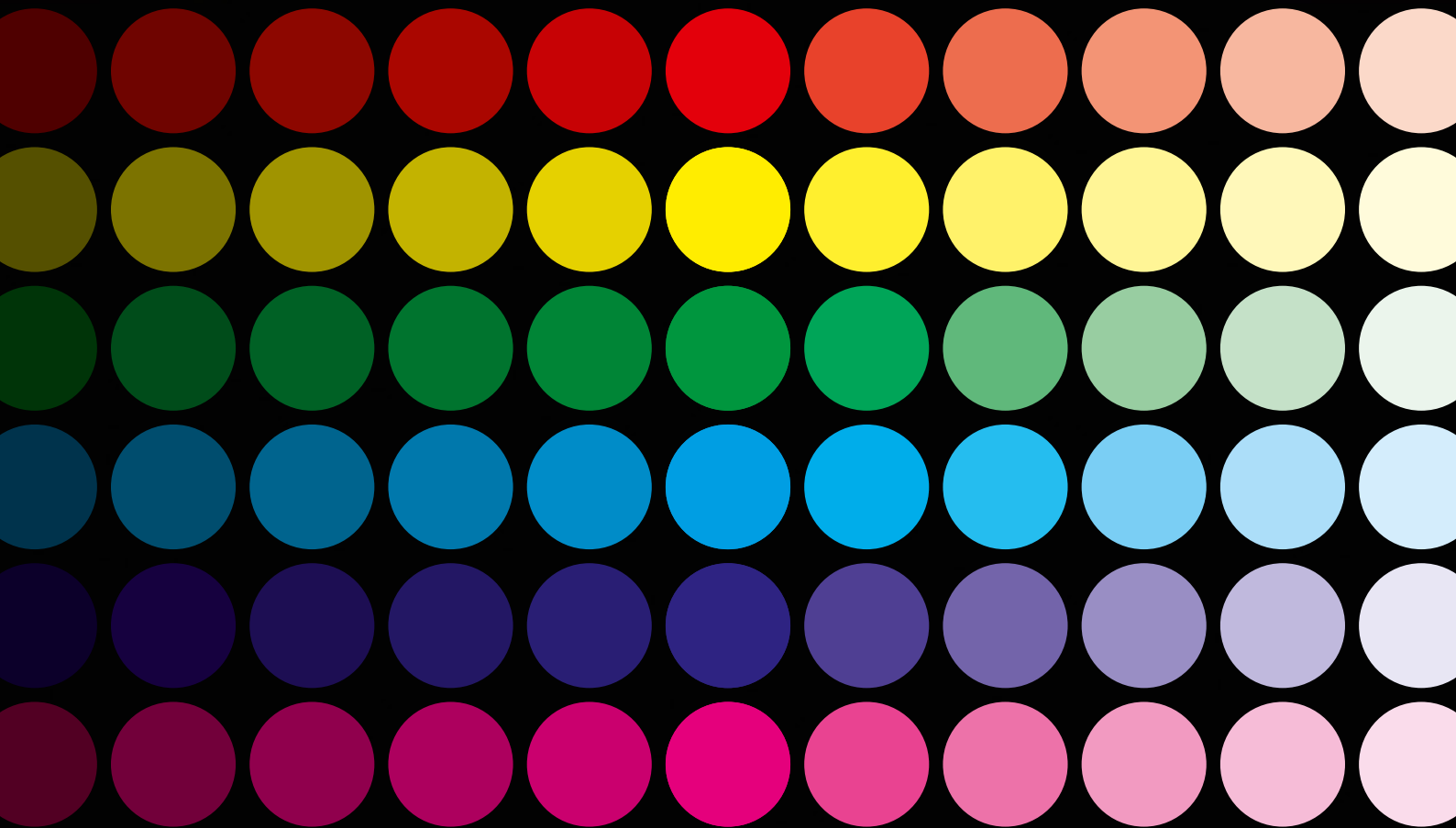


Opacity and Color Analyzer PR0120



Opacity and Color Analyzer

PR0120

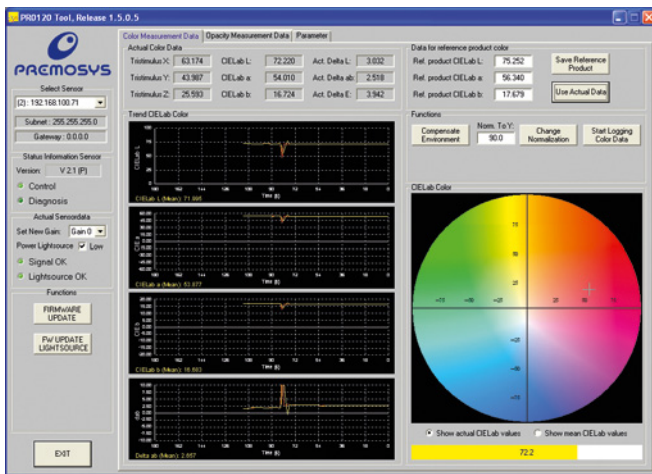
With the system Opacity and Color Analyzer the opacity as well as the color of products can be measured.

The system is divided here in a high performance measurement electronic and an external light source.

The external light source is designed as an intelligent lighting unit. That ensures, in combination with the measurement electronic, that aging and temperature drifts do not have any influence to the measurement results. Thus this is the only combined system on the market which guarantees high long-term stability.

The measurement range for opacity is on the transmitted light procedure from 0 to 5 (OD 0 to OD 5). In color mode the system works in the CIE Lab color space with a long-term stability for dE clearly below 0,2.

The measurement electronic together with the intelligent lighting unit uses a sample rate of 2kHz.



For commissioning and test a comfortable PC Tool is available.

Various optics permit a high variability for the application. Beside incident light, transmitted light can be used as well.



Technical Data Opacity and Color Analyzer:

- Seized range wavelength 400 - 700nm
- Sample rate 2 KHz selective
- Compensation of environmental light
- Resolution 16 Bit for each channel in 11 amplification levels
- Synchronous detection of all color channels
- 100MBit Ethernet Interface UDP
- WIN 32 DLL
- Variable measurement distance by use of different optics
- Power supply 24V DC
- Internal elapsed hour counter

Technical Data Intelligent Lighting Unit:

- Internal high-power LED light source
- Internal color measurement of emitted light
- Power supply 24V DC
- Interface RS 232
- Internal elapsed hour counter
- Light source with 2 power levels (low and high)